

WILLPOS A20



WILLPOS A20

Retail Innovation at Your Fingertips

INHERITS THE BEST WILLPOS A10 FEATURES

Stylish and Compact Design



Easy Maintenance

- Easy clicking mechanism to reach interfaces, hard disk and to install customer display
- Tool-less screws release the hard disk, motherboard, power supply, TFT screen and MSR

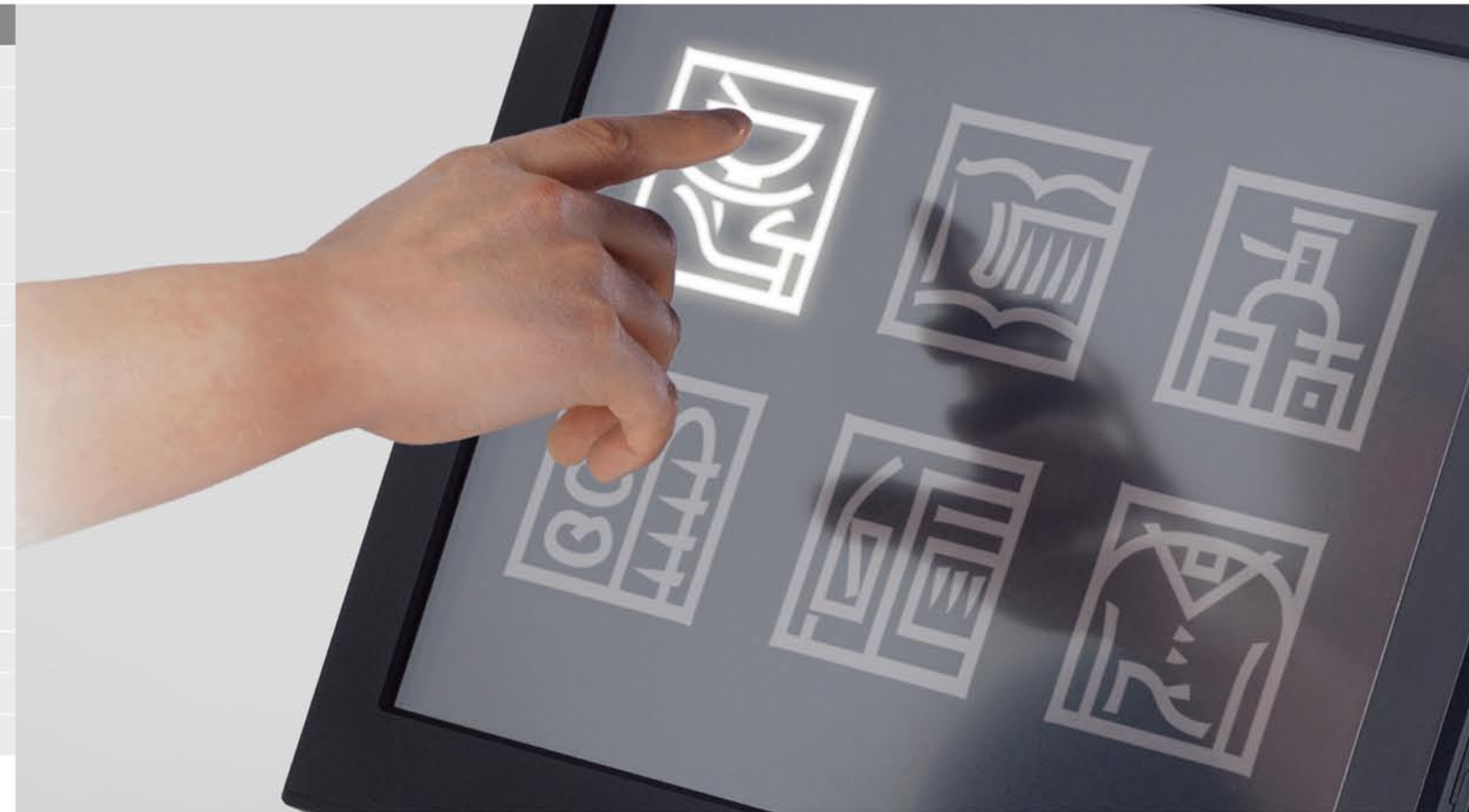


Connectivity and Tidy Cabling

- Covered ports with tidy cable management



	15" Model	12" Model
CPU	Celeron M 440 - 1.86GHz	
Memory	512Mb/1Gb (Max. 2Gb) DDR2-533/PC2-4200, 2 slots	
Display	15" TFT touch (1024 x 768)	12.1" TFT touch (800 x 600)
Dual Display	Optional: 12" or 15"	Optional: 12" or 15"
HDD	3.5" HDD 40Gb (IF: serial ATA x1) Type A: 1 x 3.5" HDD 40Gb or over Type B: 2 x 2.5" HDD 60Gb or over	
RAID	Optional: Type B: 2 x 2.5" HDD 60Gb or over (RAID1)*	
Options	Single-sided receipt printer - double-sided receipt printer remote customer display - cash drawer - fixed or tilting LIU display iButton (Dallas key) - magnetic stripe card reader - top cover wireless cover with cable (USB) - solid state flash disk (max. 4Gb)	
Interfaces	2 x COM D-Sub9 (male); 2 x powered COM D-Sub9 (female) 6 x USB (2.0), 2 x powered USB (12v), 1 x powered USB (24v) 1 x PS/2 for mouse & 1 x for keyboard 2 x 24v drawer interface 1 x 15 pin VGA female type LAN 10/100-BaseT Ethernet (RJ-45) with LED	
Audio	Line-out / mic-in, 2 x stereo speakers with volume control	
AC Inlet	AC inlet connector	
Power Supply	95w / 105w internal switching	
Weight	11.5kg	10.5kg
Dimensions	366(W) x 251(D) x 359(H) mm	306(W) x 247(D) x 337(H) mm



TOSHIBA

Your TOSHIBA TEC Dealer:

WILLPOS

TOSHIBA TEC's new POS system is called **WILLPOS** (Worthy, Innovative, Leading, Low-cost Operation) and represents the future of our POS business. "WILL" also signifies our strong will, or commitment, to achieve *monozukuri*. We will strive to make TOSHIBA TEC **WILLPOS** synonymous with general POS systems.

Specifically designed to reduce energy usage and environmental impact, the WILLPOS A20 is the finest POS choice for retailers looking for supreme performance and reliability with impressive green credentials.



*Please contact your local dealer for more information.
 ● All company and/or product names are trademarks and/or registered trademarks of their respective owners.
 ● All features and specifications described on this brochure are subjected to change without notice.

TOSHIBA TEC CORPORATION

Retail Solution Business Group
International Operations

Oval Court Ohsaki Mark East
2-17-2, Higashi Gotanda, Shinagawa-ku, Tokyo, 141-8664 Japan

<http://www.toshibatec.com>

TOSHIBA

Leading Innovation >>>

